

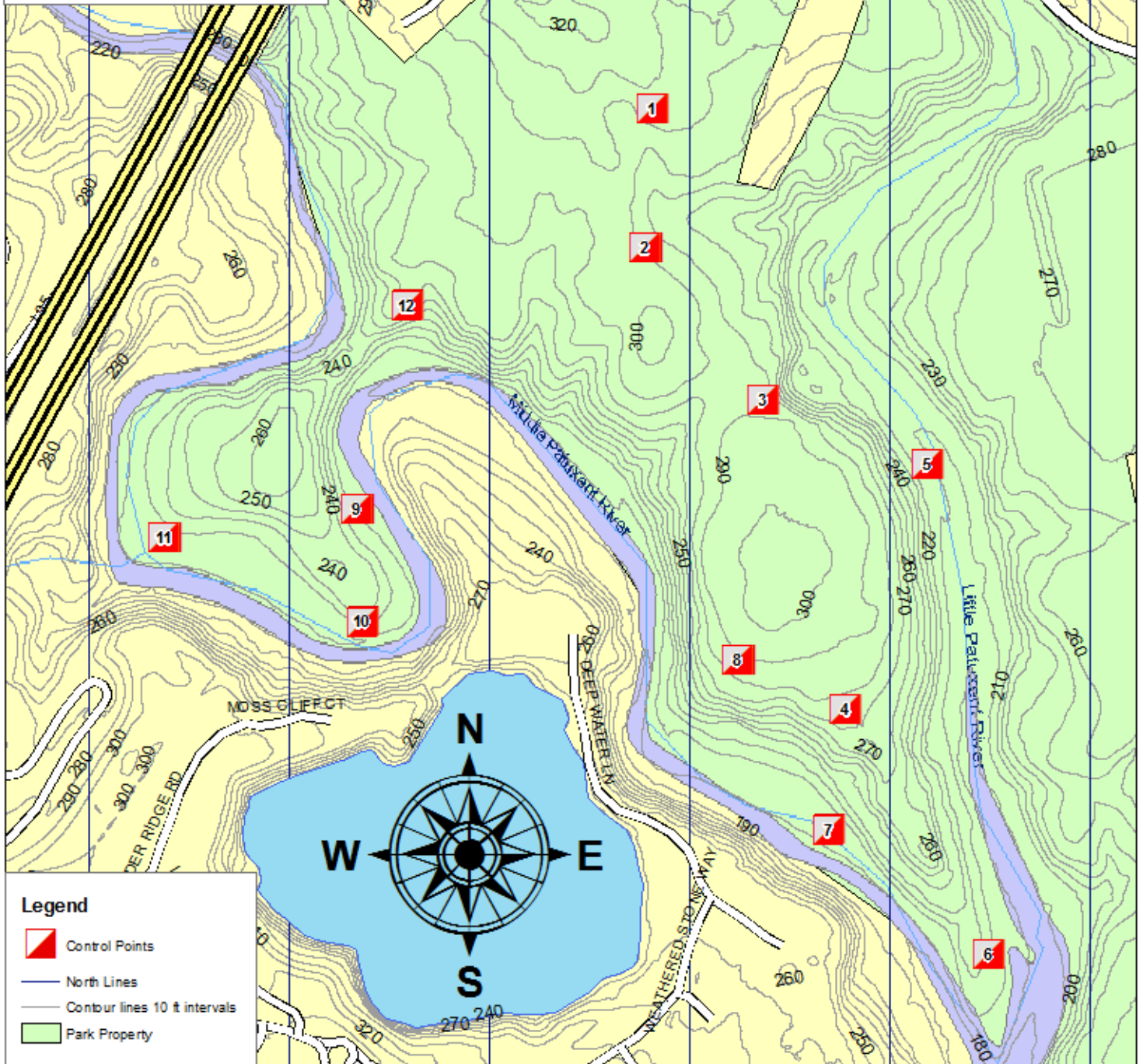
This map produced under the direction of Scott Sines during the execution of his Eagle Scout Project.

There are 12 control points throughout Wincopin Park.





This map can be downloaded from <http://Troop617.us/map.aspx>

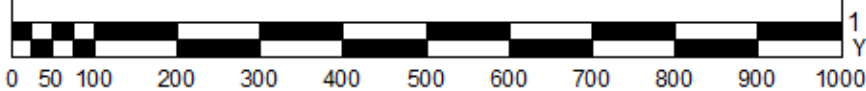
# Wincopin Park

 Start



## Legend

-  Control Points
-  North Lines
-  Contour lines 10 ft intervals
-  Park Property



1 inch equals 222 yards  
Yards

## Easy Routes

Start - 1 - 2 - 3 - 8 - Start

Start - 1 - 12 - 11 - 10 - 9 - Start

## Moderate Route

Start - 1 - 2 - 3 - 4 - 5 - 6 - 7 - 8 - 1 - Start

## Hard Route

Start - 1 - 12 - 11 - 10 - 9 - 8 - 4 - 6 - 7 - 3 - 2 - 1 - Start

## Long Route

Start - 1 - 2 - 3 - 4 - 5 - 6 - 7 - 8 - 9 - 10 - 11 - 12 - Start

All controls for this course are within sight of the trail. To help protect our habitat please navigate to the controls by way of the trails. "Bushwhacking" is not necessary. All controls look like control located at the entrance of the park and is labeled "Start" on this map.

<http://Troop617.us/map.aspx>